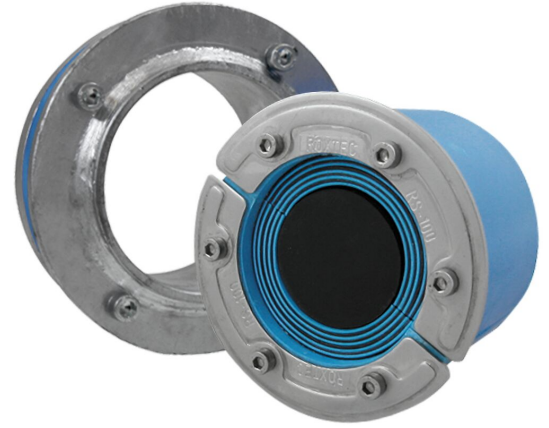




Roxtec RS X -tiiviste

Läpivientä käytetään, kun hitsaus ei ole sallittua, suositeltua tai toivottua.

Roxtec RS X on halkillinen tiiviste yksittäisille kaapeleille ja putkille. Ei hitsaamista. Läpivienti sopii jälkiasennukseen tai kun hitsaus ei ole sallittua, suositeltua tai toivottua. Holkin ulkopuolella on kumitiiviste, joka laajenee tiiviiksi aukossa, kun pultteja kiristetään. RS X -tiiviste sopii erikokoisiin kaapeleihin ja putkiin irrotettavien kerrosten ansiosta.



- Erinomainen jälkiasennuksiin

Tuotteen ominaisuudet



Paloluokiteltu



Vesitiivis



Kaasutiivis

Asennusrakenne



Metalli

Asennustyyppi



Olemassa oleva reikä

Luokitukset ja sertifiointit

Paloluokka

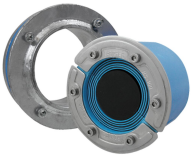
- A-luokka IMO 2010 -standardin palokoeoodin (IMO 2010 FTP Code) mukaan

Tiiviys

- Kaasutiiviys: 2,67 bar (katastrofi)
- Vesitiiviys: 4 bar (katastrofi)

Tiivistyskomponenttien tiedot

Tiivistyskomponentit



RS X -kitti



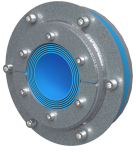
Roxtec-asennusrasva

Lisätietoja on osoitteessa [roxtec.com](https://www.roxtec.com).

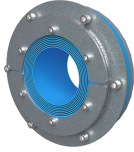


Valmiiksi määritetyt läpivientisarjat

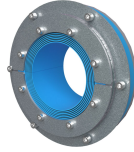
mm/kg



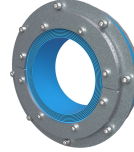
RS X 100 AISI316
WOC/GALV



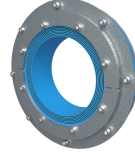
RS X 125 AISI316
WOC/GALV



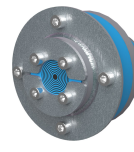
RS X 150 AISI316
WOC/GALV



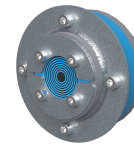
RS X 175 AISI316
WOC/GALV



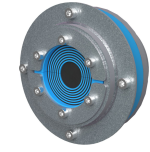
RS X 200 AISI316
WOC/GALV



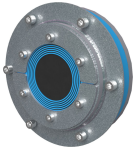
RS X 43 AISI316/GALV



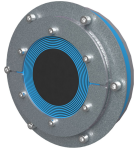
RS X 50 AISI316/GALV



RS X 75 AISI316/GALV



RS X 100 AISI316/GALV



RS X 125 AISI316/GALV

Otsikko	Kokoonpano	Aukon mitat Ø	Paino	Tuotenumero
RS X 100 AISI316 WOC/GALV	1x (48.0-70.0)	145 - 147	3	RSXG001001021
RS X 125 AISI316 WOC/GALV	1x (66.0-98.0)	170 - 172	4	RSXG001251021
RS X 150 AISI316 WOC/GALV	1x (93.0-119.0)	199 - 201	5.2	RSXG001501021
RS X 175 AISI316 WOC/GALV		220 - 222	5	RSXG001751021
RS X 200 AISI316 WOC/GALV		250 - 252	6.6	RSXG002001021
RS X 43 AISI316/GALV	1x (4.0-23.0)	82 - 84	0.8	RSXG100431021
RS X 50 AISI316/GALV	1x (8.0-30.0)	90 - 92	1.4	RSXG100501021
RS X 75 AISI316/GALV	1x (24.0-54.0)	115 - 117	2.2	RSXG100751021
RS X 100 AISI316/GALV	1x (48.0-70.0)	145 - 147	3.2	RSXG101001021
RS X 125 AISI316/GALV	1x (66.0-98.0)	170 - 172	2.8	RSXG101251021

The product information provided by Roxtec does not release the purchaser of the Roxtec system, or part thereof, from the obligation to independently determine the suitability of the products for the intended process, installation and/or use.

Roxtec gives no guarantee for the Roxtec system or any part thereof and assumes no liability for any loss or damage whatsoever, whether direct, indirect, consequential, loss of profit or otherwise, occurred or caused by the Roxtec systems or installations containing components not manufactured by an authorized manufacturer and/or occurred or caused by the use of the Roxtec system in a manner or for an application other than for which the Roxtec system was designed or intended.

Roxtec expressly excludes any implied warranties of merchantability and fitness for a particular purpose and all other express or implied representations and warranties provided by statute or common law. User determines suitability of the Roxtec system for intended use and assumes all risk and liability in connection therewith. In no event shall Roxtec be liable for indirect, consequential, punitive, special, exemplary or incidental damages or losses.

The Roxtec products are offered and sold in accordance with the conditions of the Roxtec General Terms of Sales. The latest version of the Roxtec General Terms of Sales can be downloaded from <https://www.roxtec.com/en/about-us/about-roxtec/general-terms-of-sales/>

We reserve the right to make changes to the product and technical information without further notice. Any errors in print or entry are no claims for indemnity. The content of this publication is the property of Roxtec International AB and is protected by copyright.

This document was generated on: 2024-04-06